
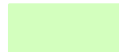
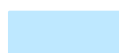
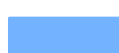





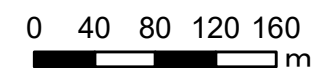
綾川町  
浸水想定区域図  
【最大浸水深】

長池

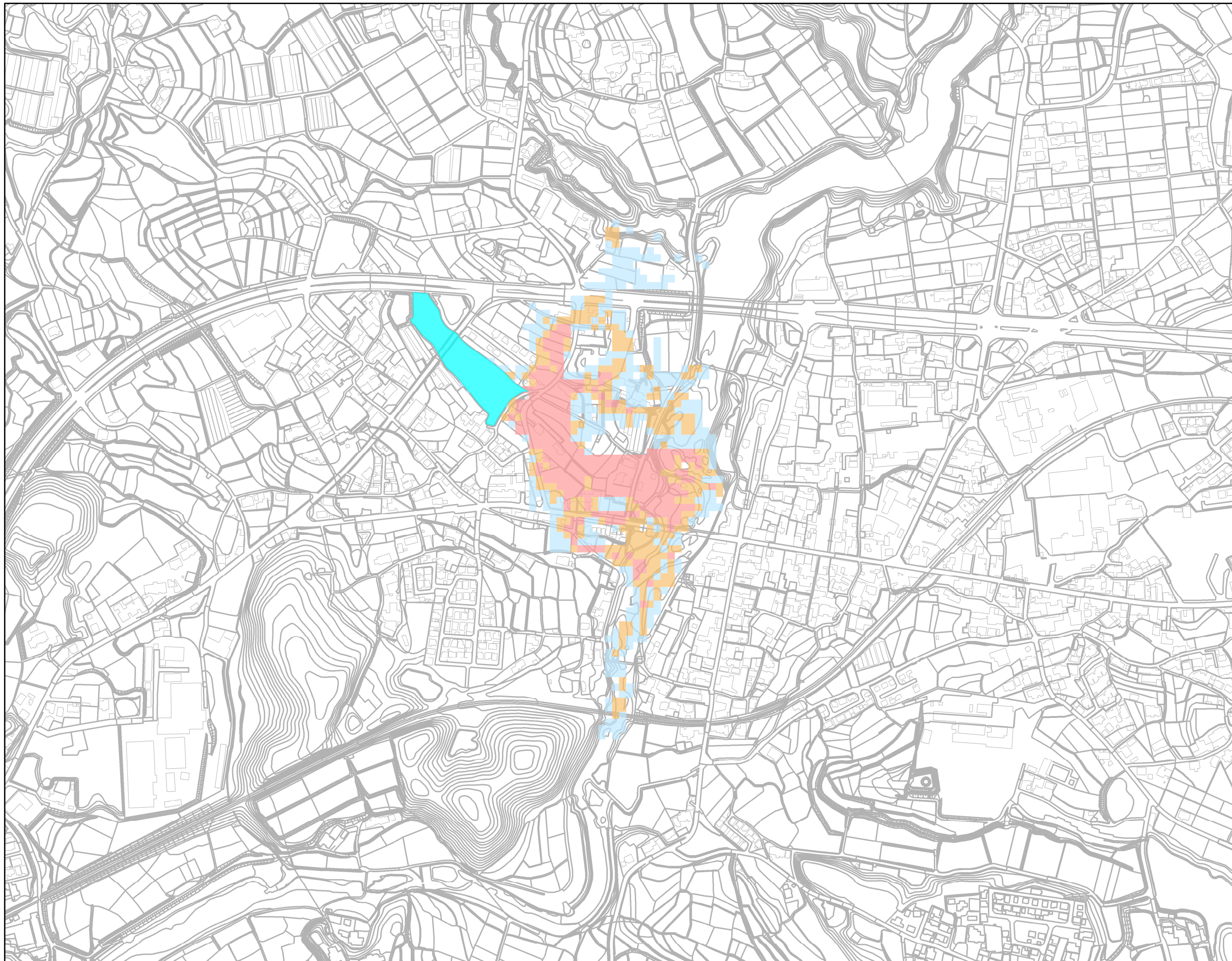
凡例  
最大浸水深

	0.5m未満
	0.5 ～1.0m未満
	1.0 ～2.0m未満
	2.0 ～3.0m未満
	3.0 ～5.0m未満
	5.0m以上
	対象ため池

1:5,000



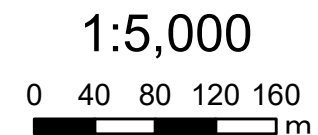




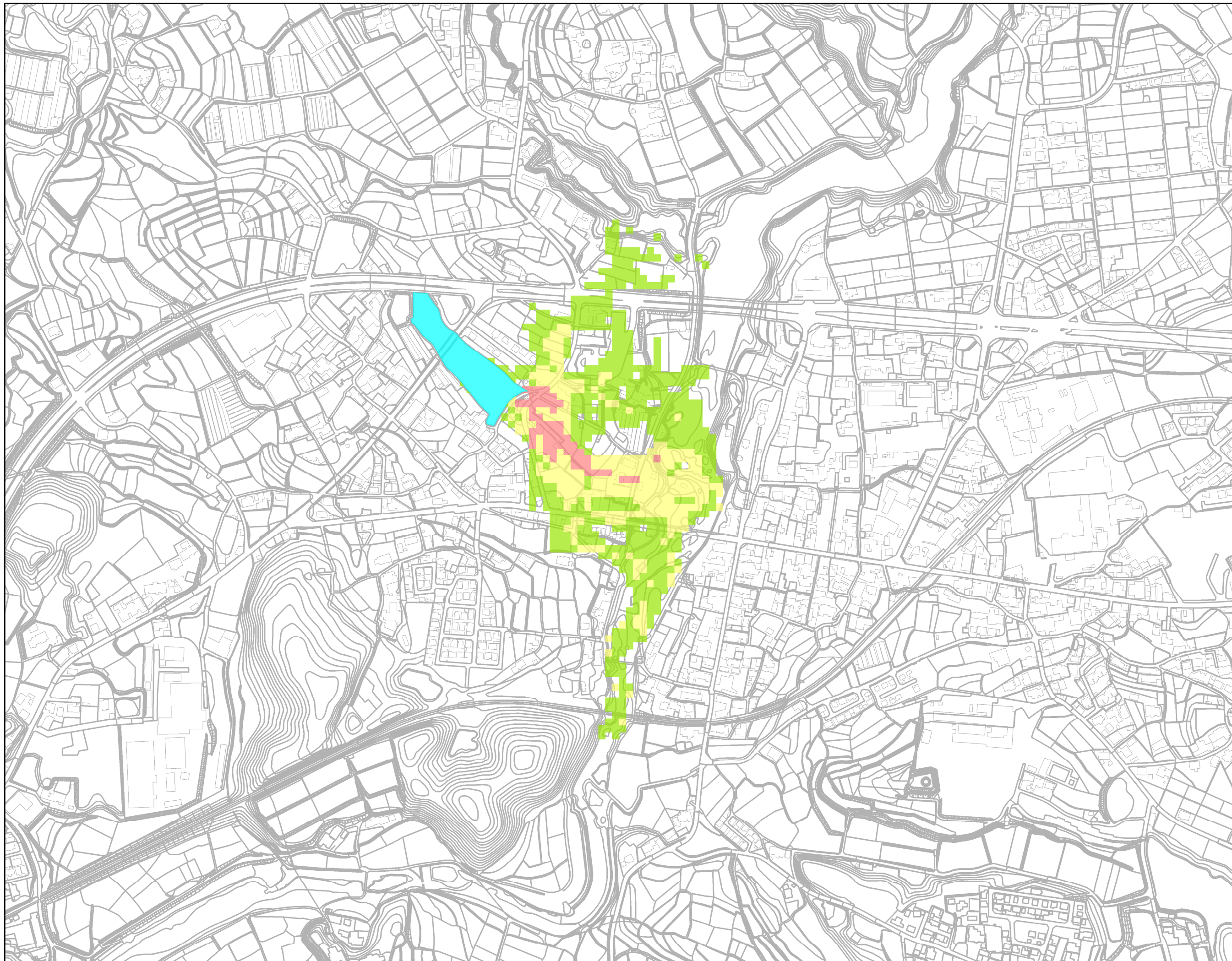
綾川町  
浸水想定区域図  
【最大流速】

長池

凡例	
最大流速	
	0.5m/s未満
	0.5 ~1.0m/s未満
	1.0m/s以上
	対象ため池



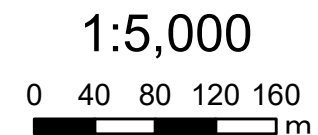




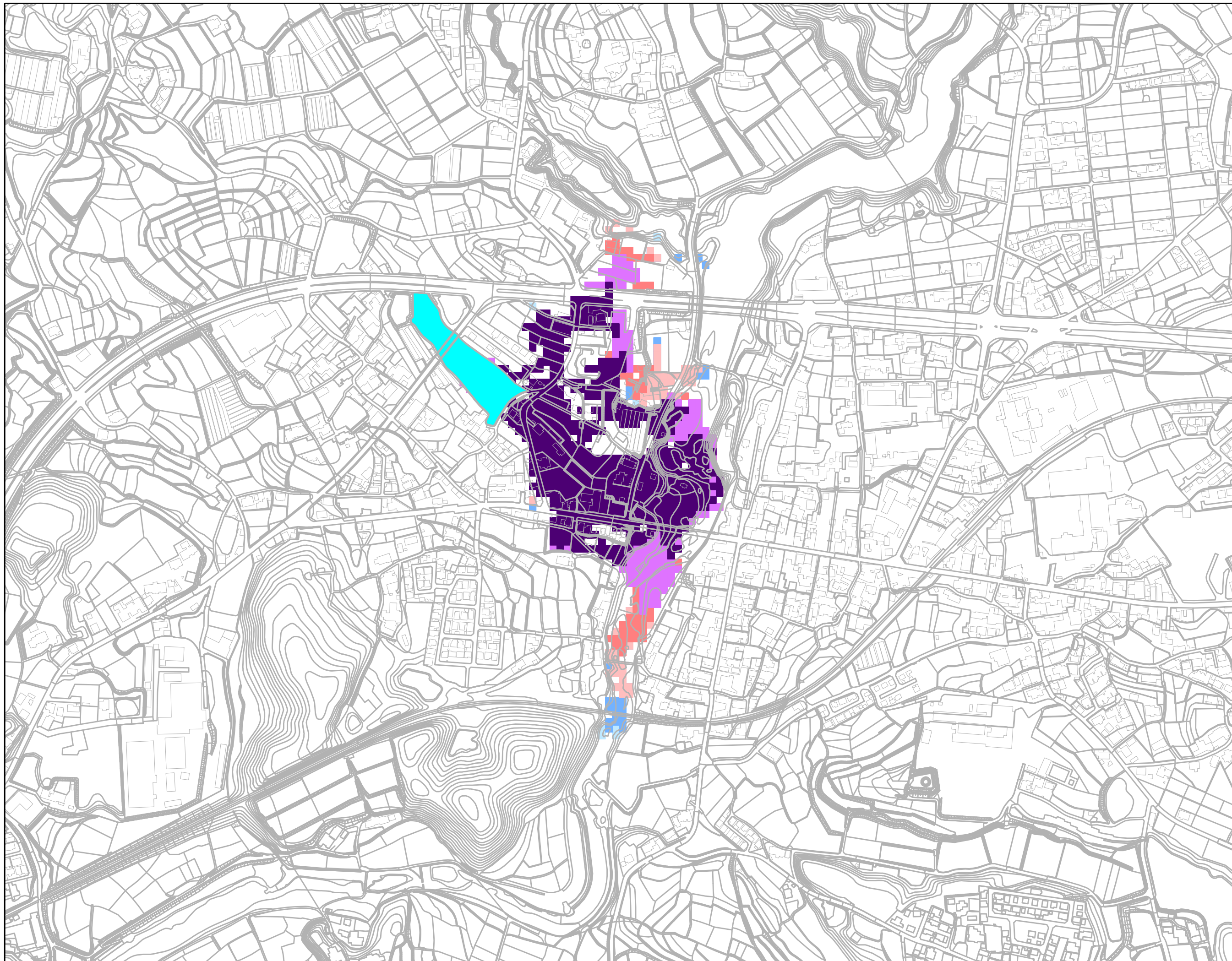
綾川町  
浸水想定区域図  
【歩行困難】

長池

凡例	
歩行困難	
<span style="display:inline-block; width:15px; height:15px; background-color:red;"></span>	不可能
<span style="display:inline-block; width:15px; height:15px; background-color:yellow;"></span>	困難
<span style="display:inline-block; width:15px; height:15px; background-color:limegreen;"></span>	可能
<span style="display:inline-block; width:15px; height:15px; background-color:cyan;"></span>	対象ため池





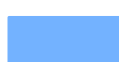
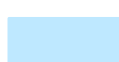







綾川町  
浸水想定区域図  
【浸水到達時間】

長池

凡例 浸水到達時間	
	5分後
	10分後
	15分後
	30分後
	45分後
	60分後
	対象ため池

