
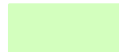
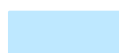
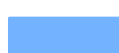





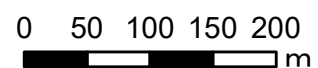
綾川町  
浸水想定区域図  
【最大浸水深】

中池

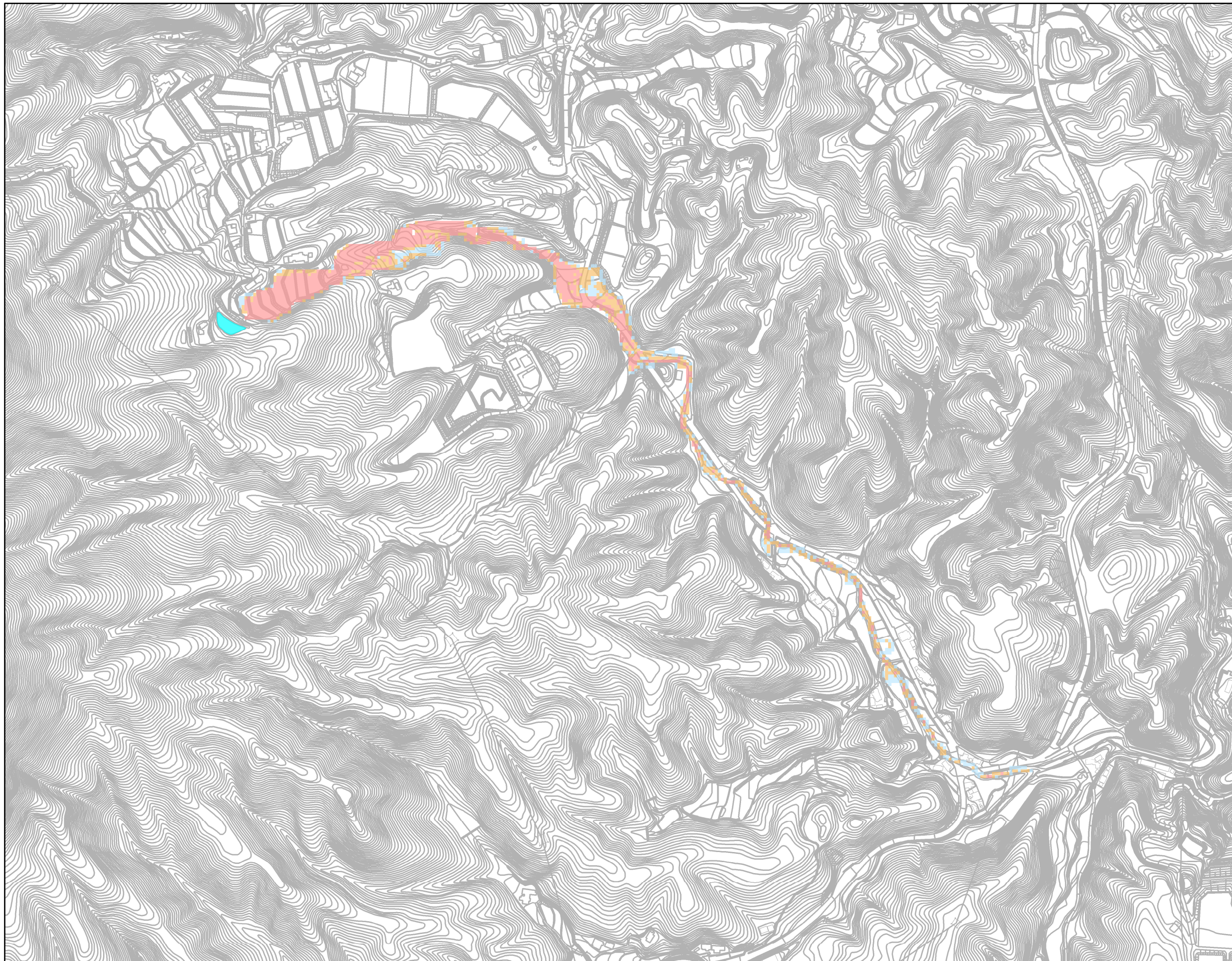
凡例  
最大浸水深

	0.5m未満
	0.5 ～1.0m未満
	1.0 ～2.0m未満
	2.0 ～3.0m未満
	3.0 ～5.0m未満
	5.0m以上
	対象ため池

1:6,000

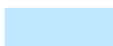









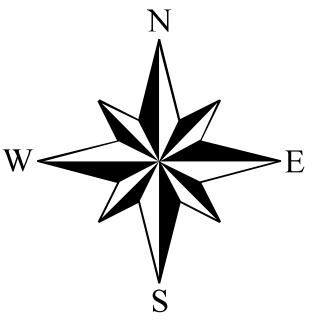
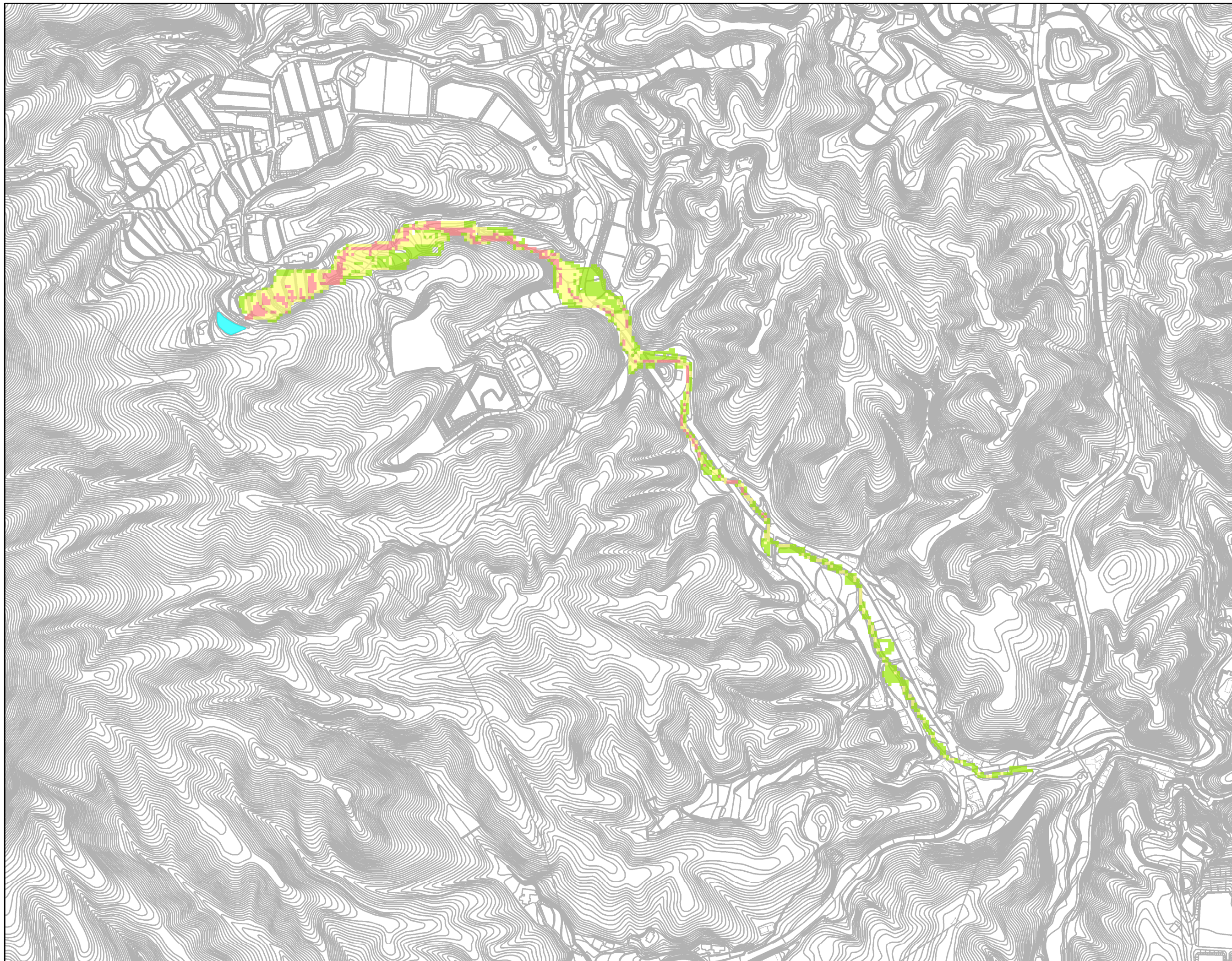
綾川町  
浸水想定区域図  
【最大流速】

中池

凡例	
最大流速	
	0.5m/s未満
	0.5 ~1.0m/s未満
	1.0m/s以上
	対象ため池



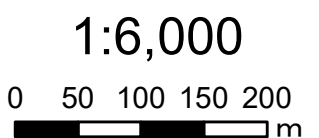




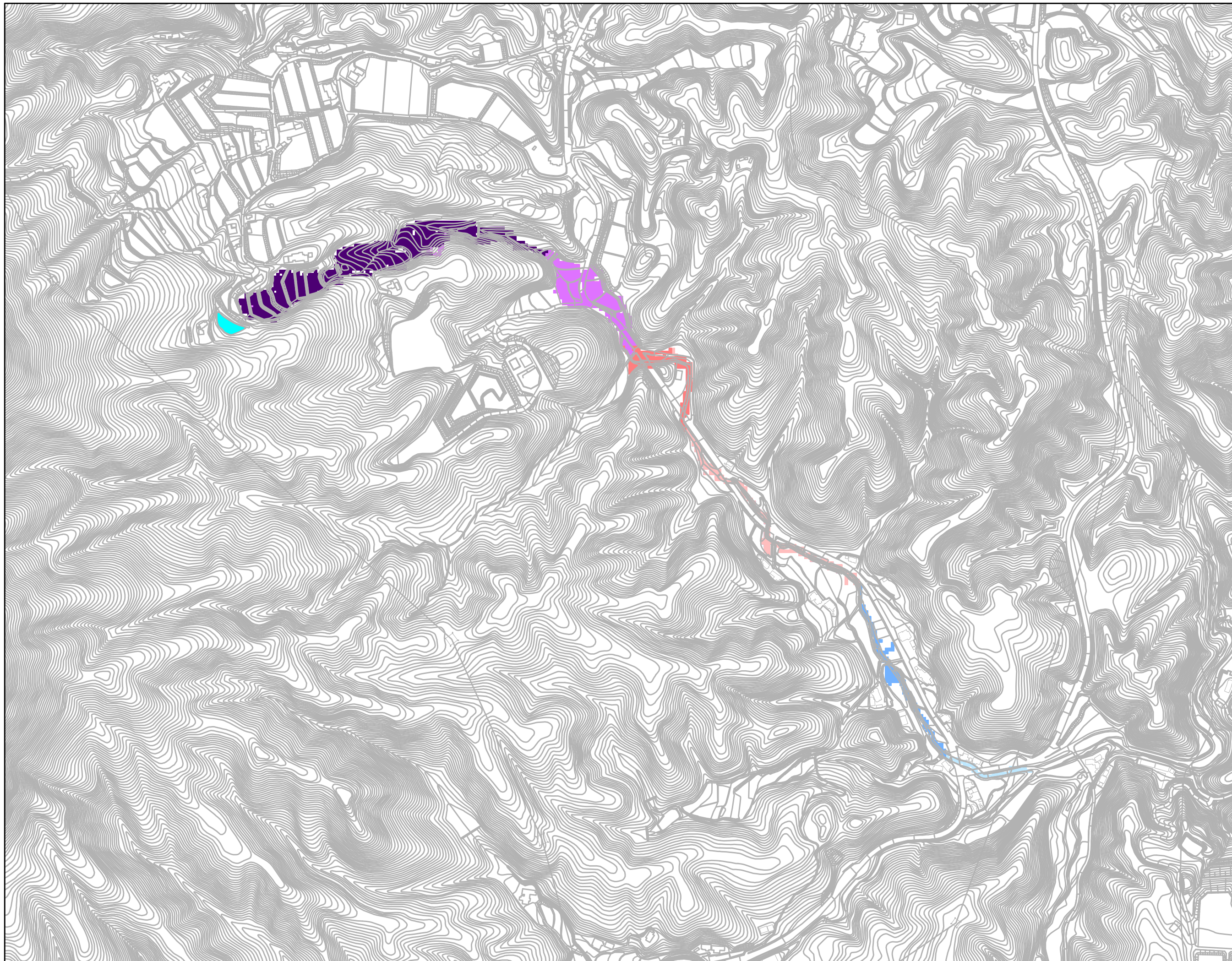
綾川町  
浸水想定区域図  
【歩行困難】

中池

凡例	
歩行困難	
	不可能
	困難
	可能
	対象ため池







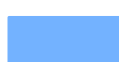
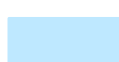





綾川町  
浸水想定区域図  
【浸水到達時間】

中池

凡例  
浸水到達時間

	5分後
	10分後
	15分後
	30分後
	45分後
	60分後
	対象ため池

