

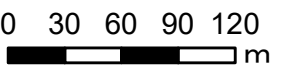
綾川町
浸水想定区域図
【最大浸水深】

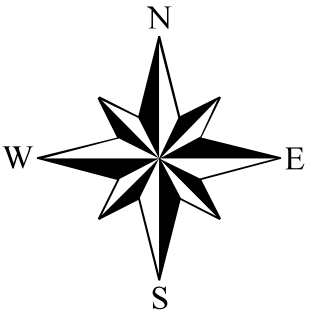
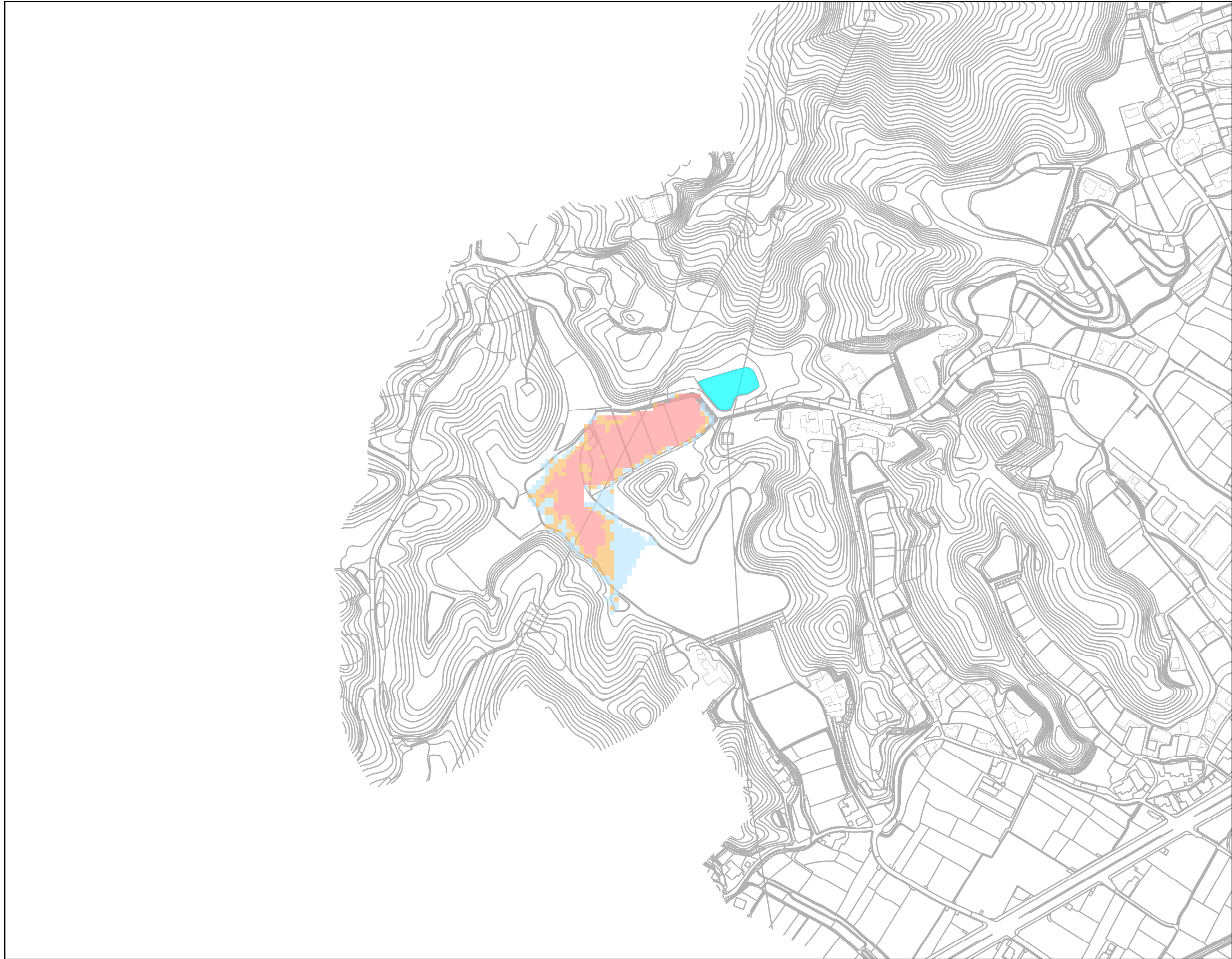
伝四郎池

凡例
最大浸水深

0.5m未満
0.5 ～1.0m未満
1.0 ～2.0m未満
2.0 ～3.0m未満
3.0 ～5.0m未満
5.0m以上
対象ため池

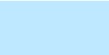



1:4,000



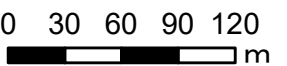


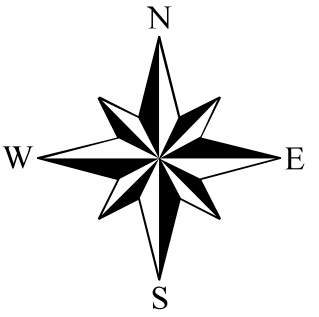
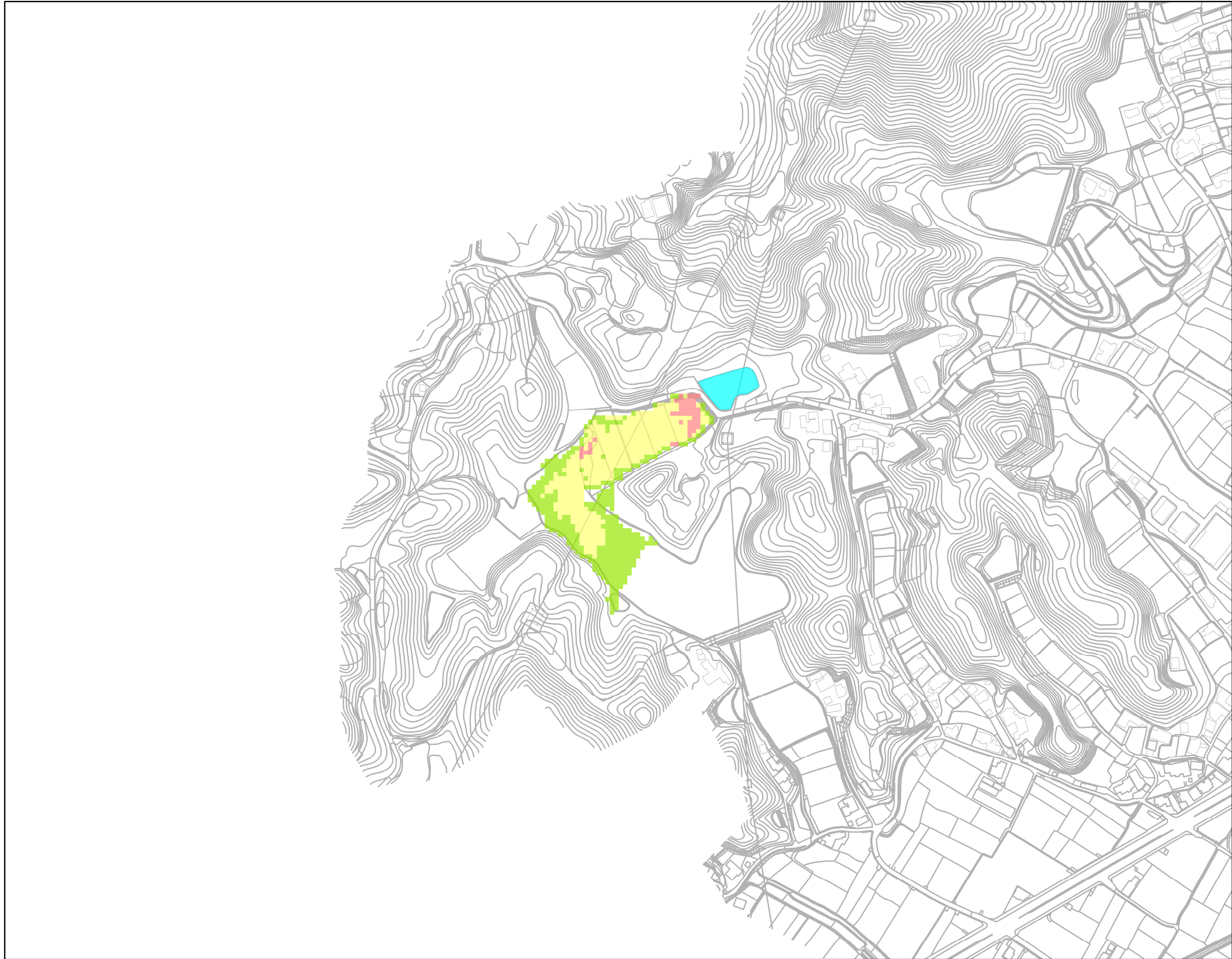
綾川町
浸水想定区域図
【最大流速】

伝四郎池

凡例	
最大流速	
	0.5m/s未満
	0.5 ~1.0m/s未満
	1.0m/s以上
	対象ため池

1:4,000



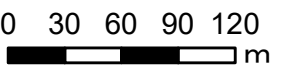


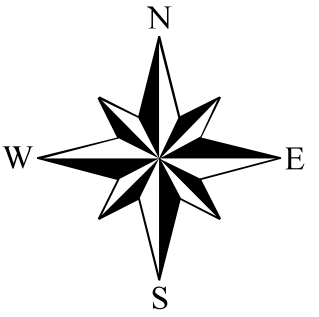
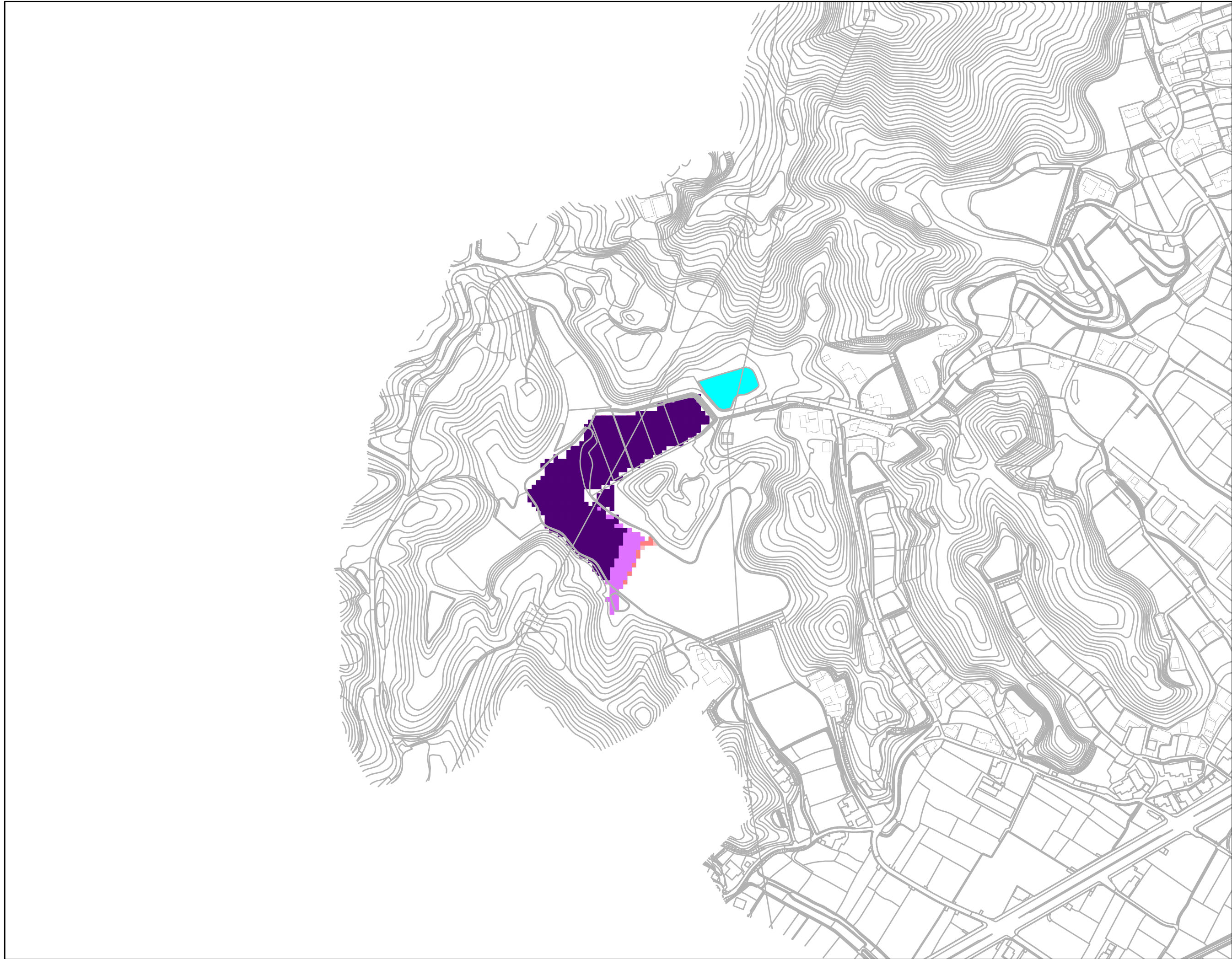
綾川町
浸水想定区域図
【歩行困難】

伝四郎池

凡例	
歩行困難	
	不可能
	困難
	可能
	対象ため池

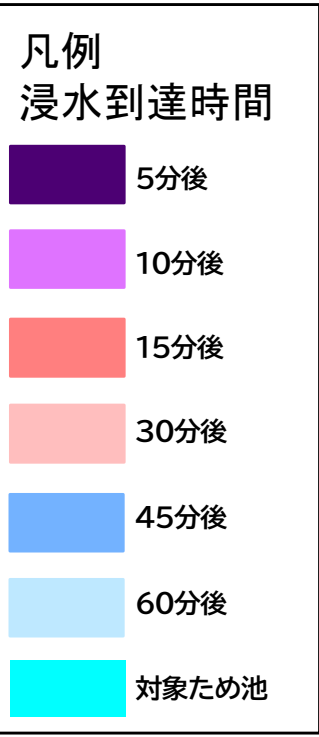
1:4,000





綾川町
浸水想定区域図
【浸水到達時間】

伝四郎池



1:4,000

