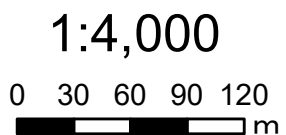
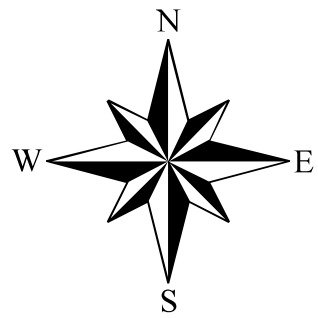
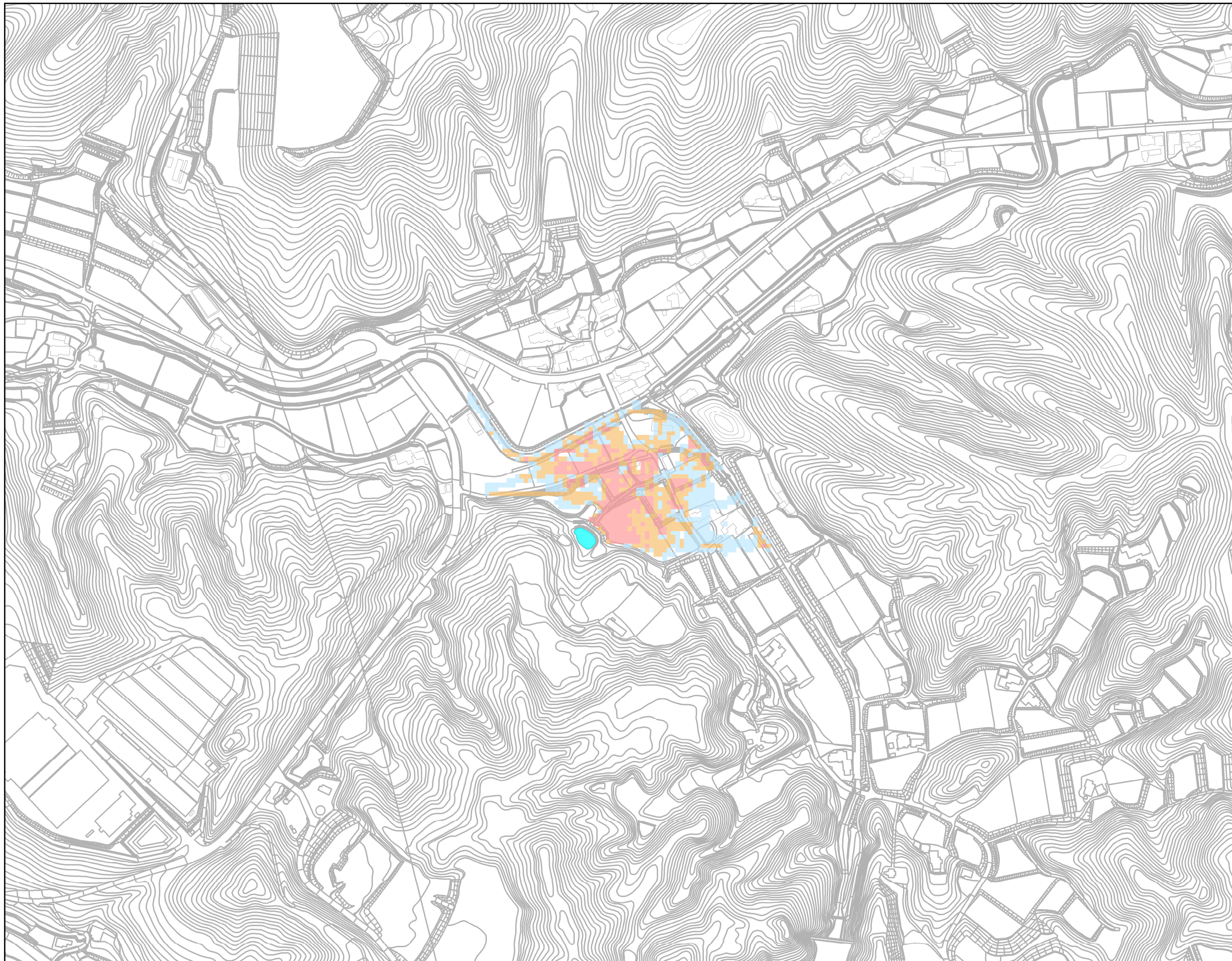


綾川町  
浸水想定区域図  
【最大浸水深】  
タバコ谷池

凡例  
最大浸水深

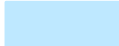



0.5m未満
0.5 ~1.0m未満
1.0 ~2.0m未満
2.0 ~3.0m未満
3.0 ~5.0m未満
5.0m以上
対象ため池



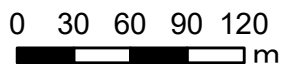


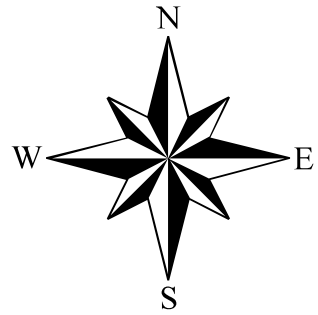
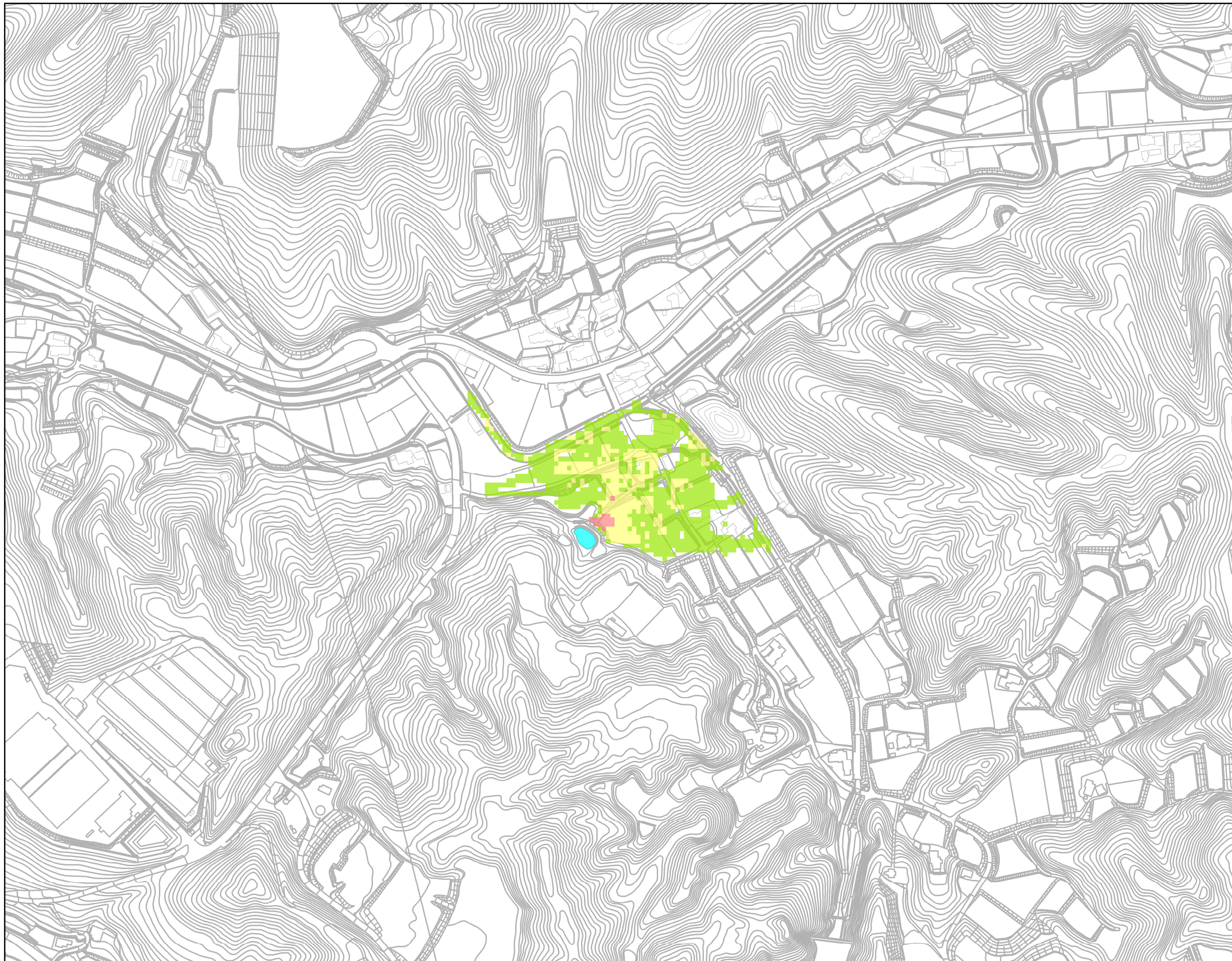
綾川町  
浸水想定区域図  
【最大流速】

タバコ谷池

凡例	
最大流速	
	0.5m/s未満
	0.5 ~1.0m/s未満
	1.0m/s以上
	対象ため池

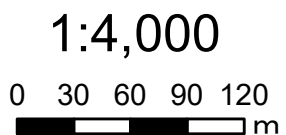
1:4,000

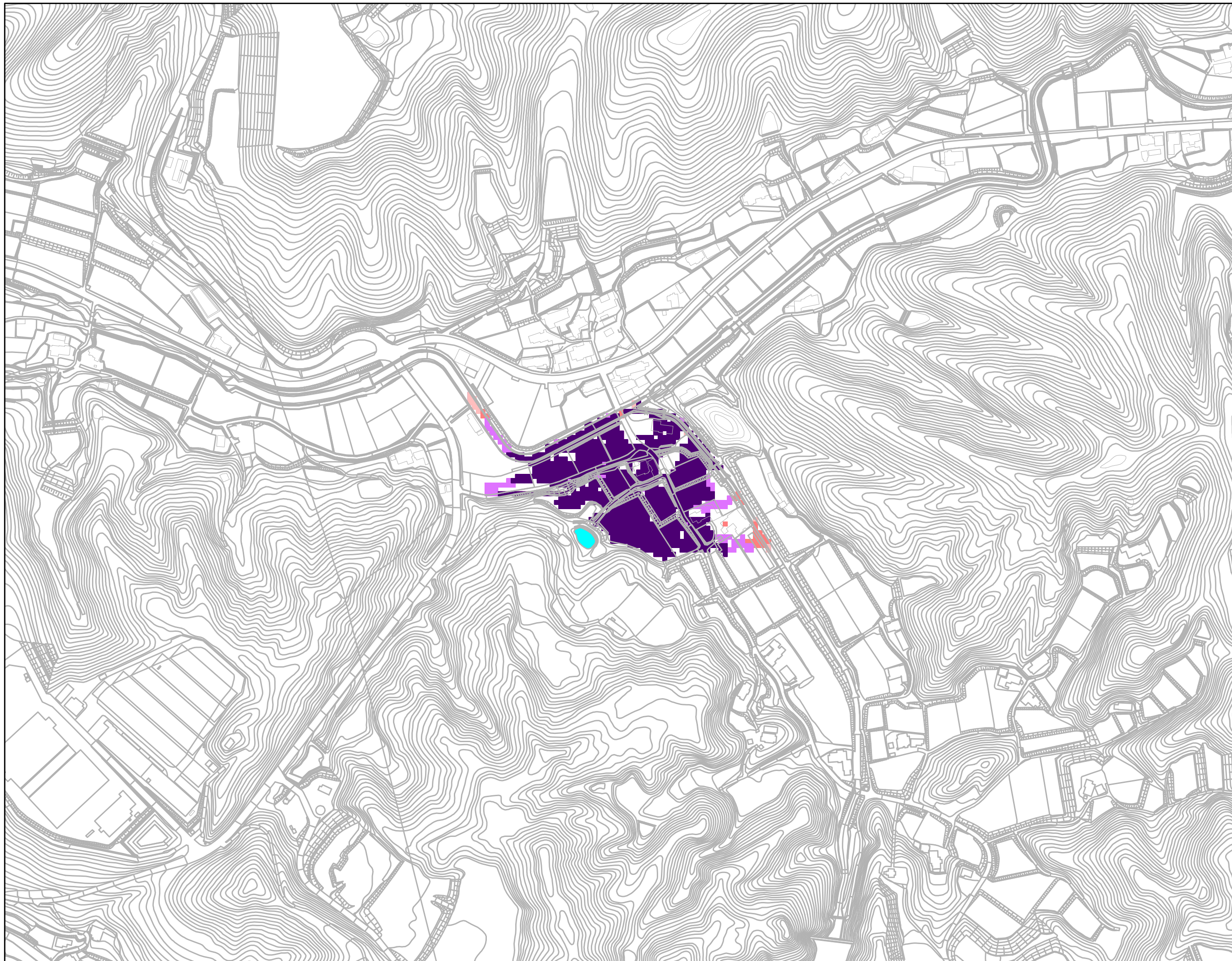




綾川町  
浸水想定区域図  
【歩行困難】  
タバコ谷池

凡例	
歩行困難	
	不可能
	困難
	可能
	対象ため池





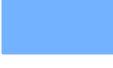
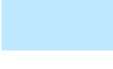





綾川町  
浸水想定区域図  
【浸水到達時間】

タバコ谷池

凡例  
浸水到達時間

	5分後
	10分後
	15分後
	30分後
	45分後
	60分後
	対象ため池

1:4,000

