
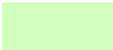
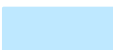
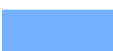





綾川町
浸水想定区域図
【最大浸水深】

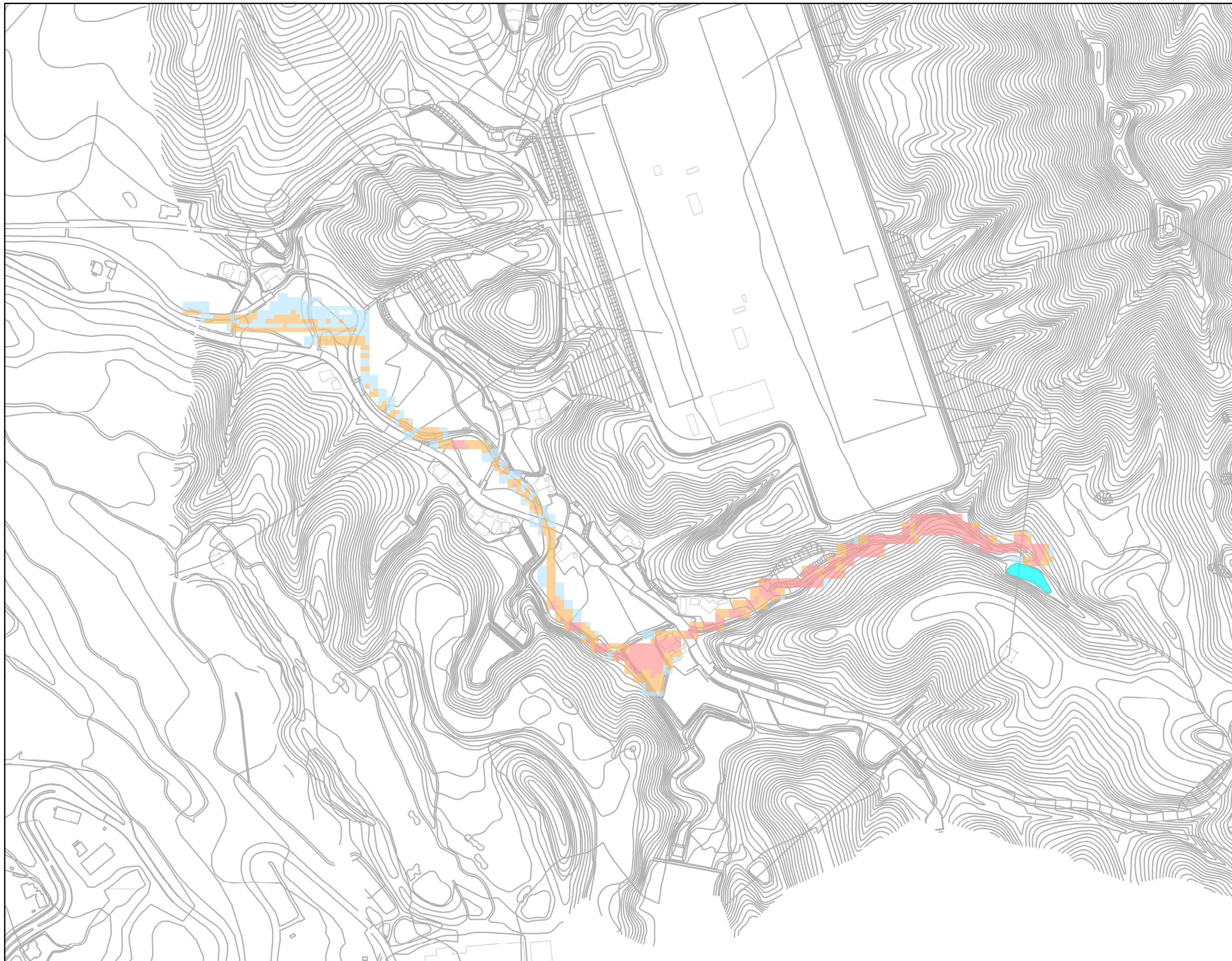
三島池

凡例
最大浸水深

	0.5m未満
	0.5 ~1.0m未満
	1.0 ~2.0m未満
	2.0 ~3.0m未満
	3.0 ~5.0m未満
	5.0m以上
	対象ため池

1:4,000



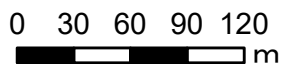


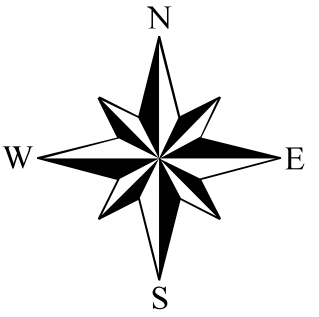
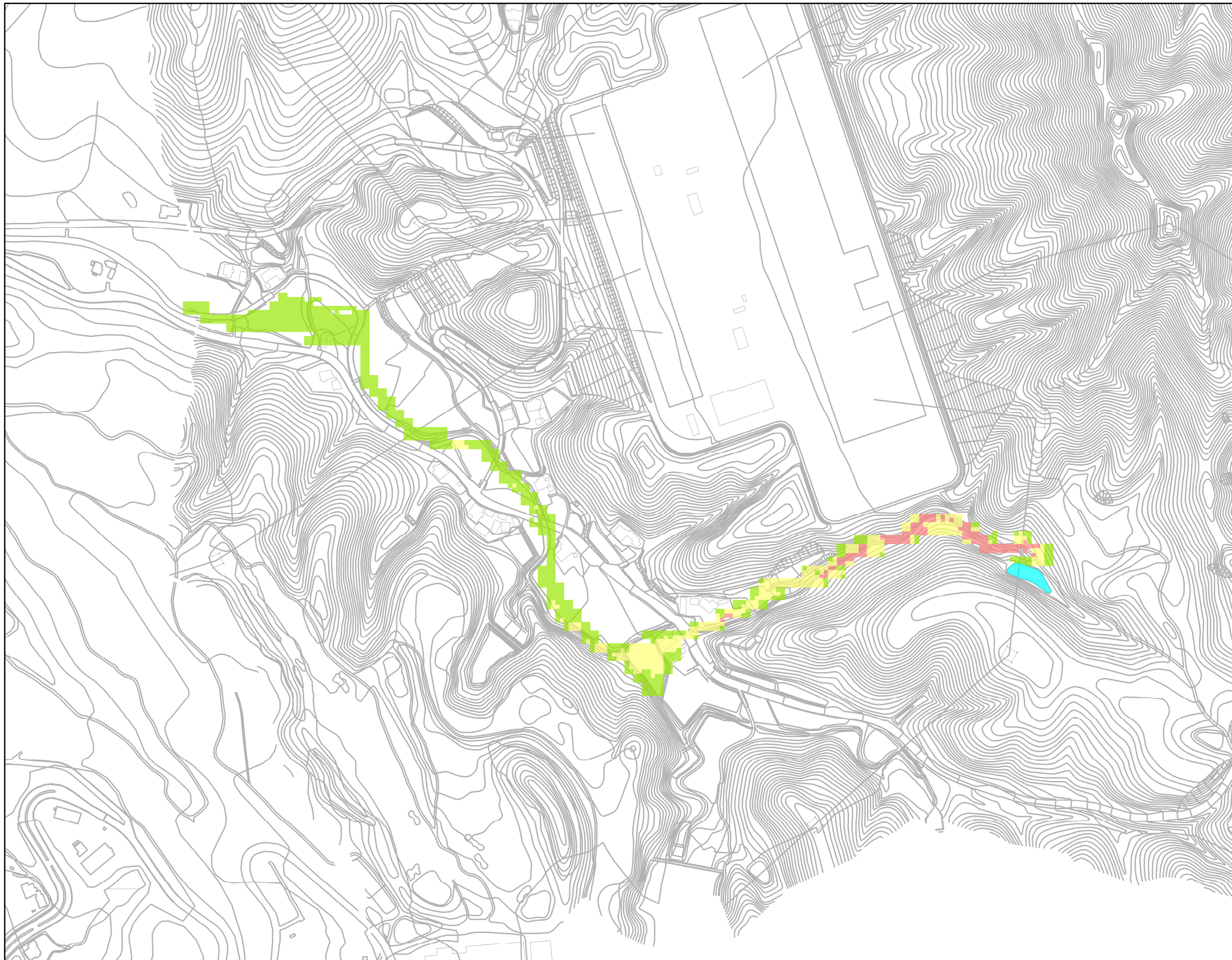
綾川町
浸水想定区域図
【最大流速】

三島池

凡例	
最大流速	
	0.5m/s未満
	0.5 ~1.0m/s未満
	1.0m/s以上
	対象ため池

1:4,000



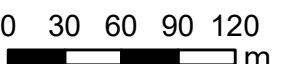


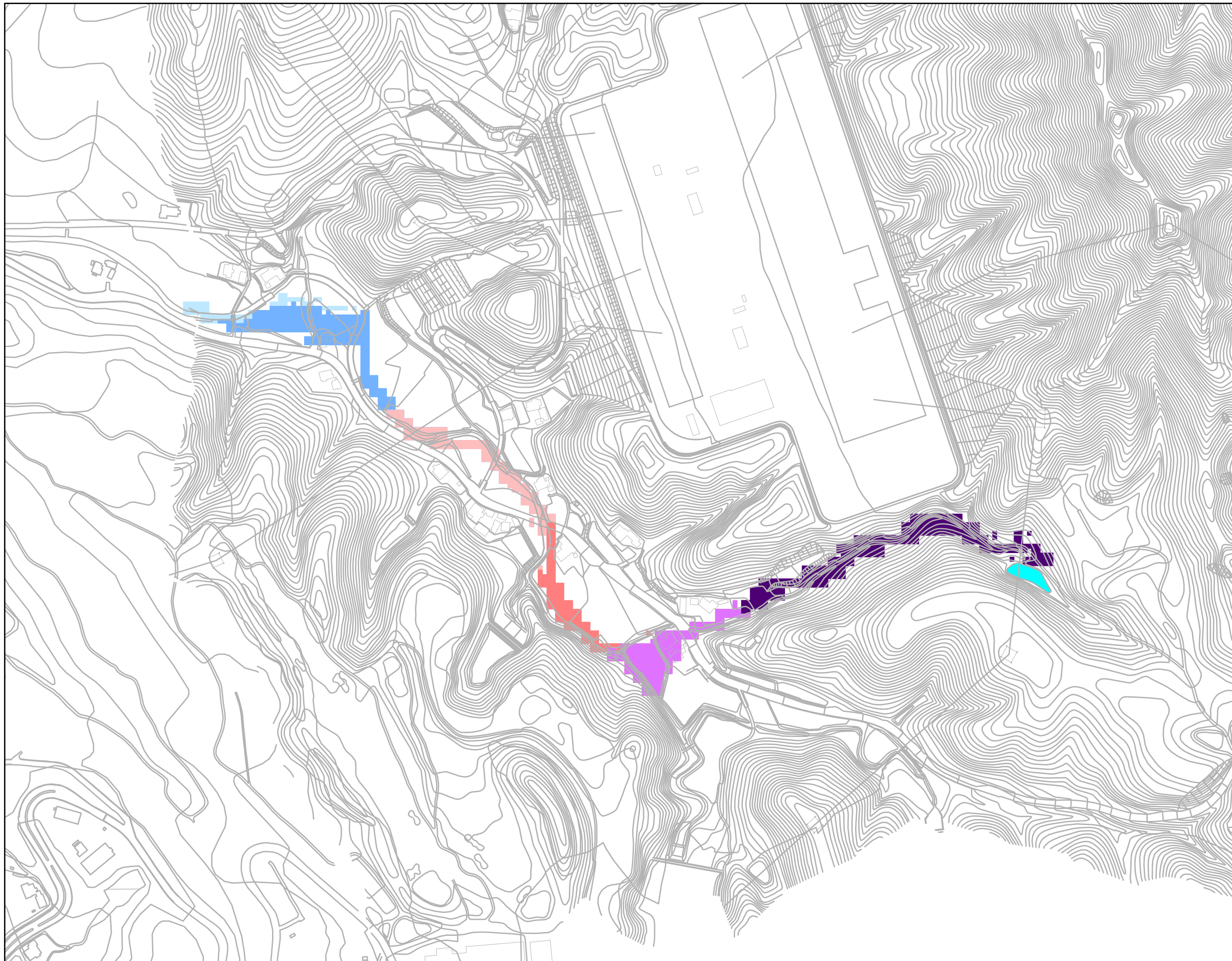
綾川町
浸水想定区域図
【歩行困難】

三島池

凡例	
歩行困難	
	不可能
	困難
	可能
	対象ため池

1:4,000





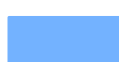
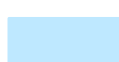





綾川町
浸水想定区域図
【浸水到達時間】

三島池

凡例
浸水到達時間

	5分後
	10分後
	15分後
	30分後
	45分後
	60分後
	対象ため池

1:4,000

