
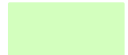
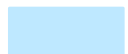
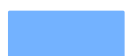



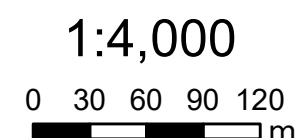


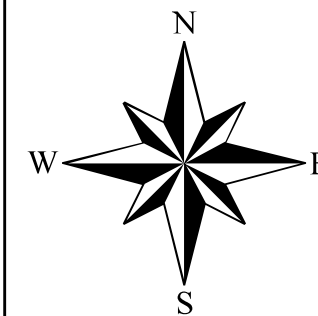
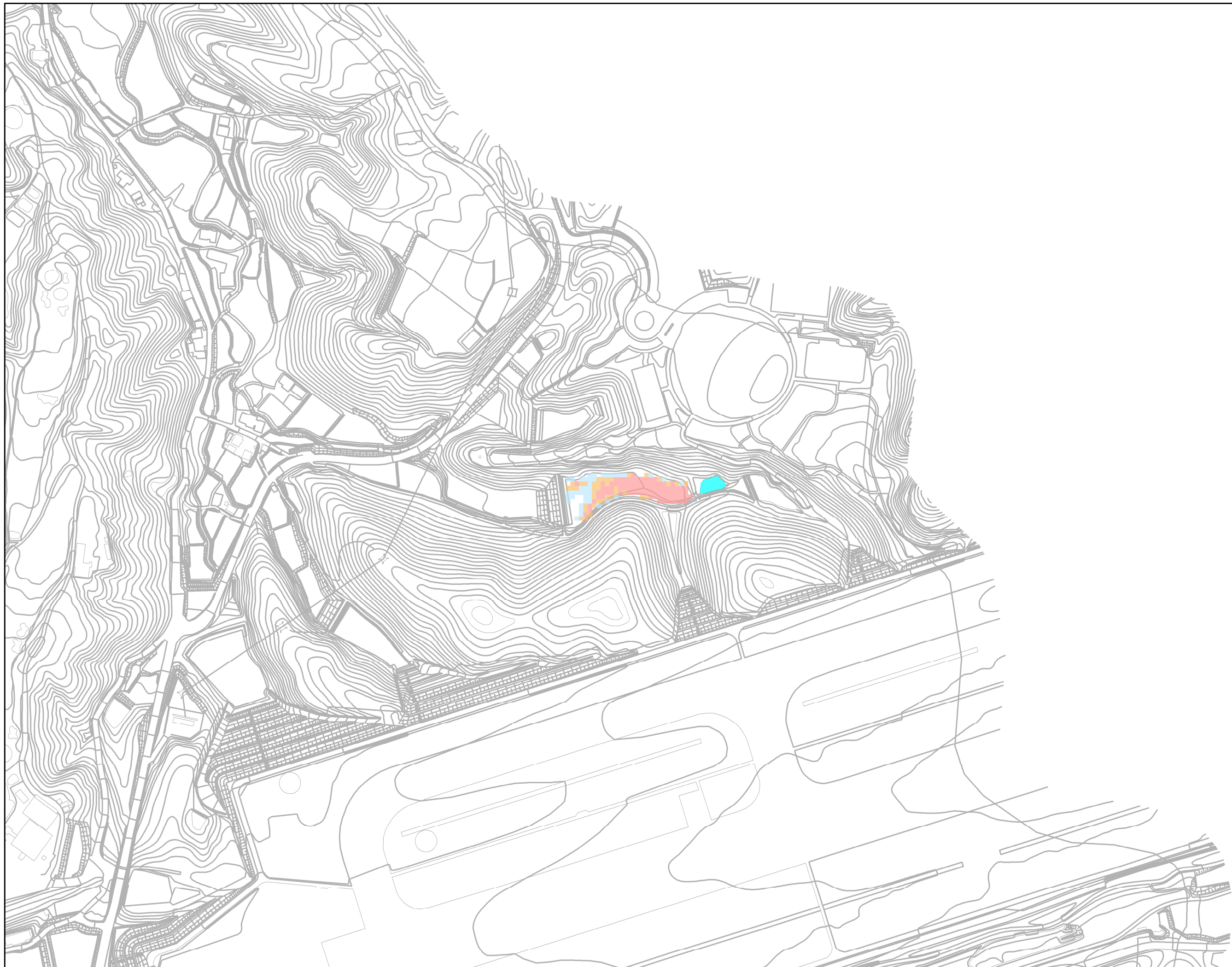
綾川町  
 浸水想定区域図  
 【最大浸水深】

小屋谷下池

凡例  
 最大浸水深

	0.5m未満
	0.5 ~1.0m未満
	1.0 ~2.0m未満
	2.0 ~3.0m未満
	3.0 ~5.0m未満
	5.0m以上
	対象ため池





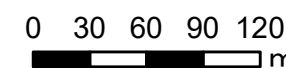
綾川町  
浸水想定区域図  
【最大流速】

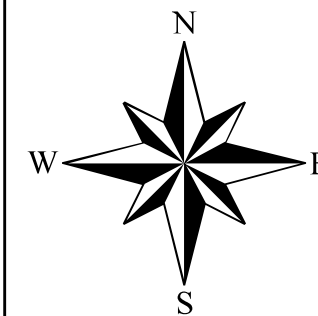
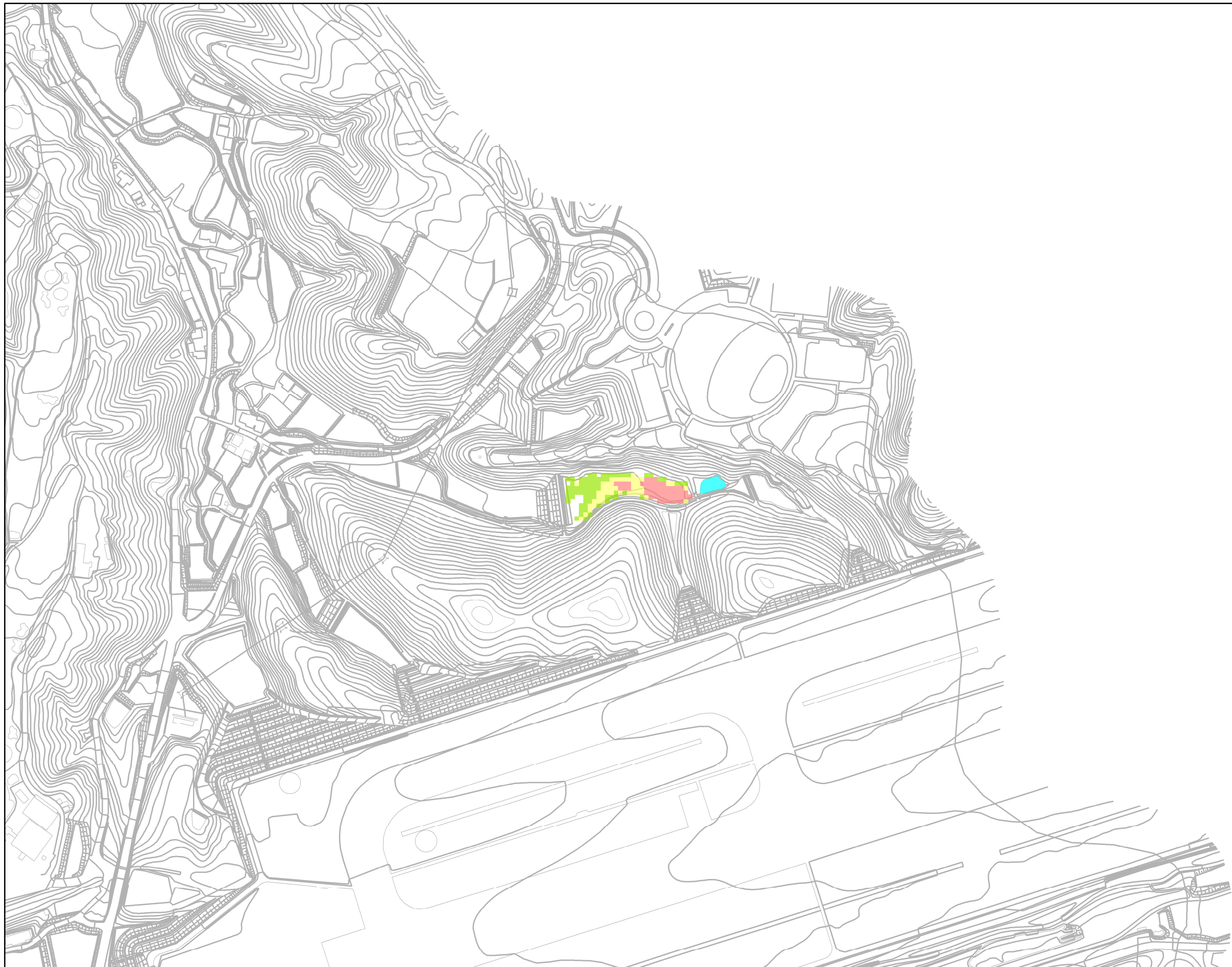
小屋谷下池

凡例  
最大流速

- 0.5m/s未満
- 0.5 ~ 1.0m/s未満
- 1.0m/s以上
- 対象ため池





1:4,000

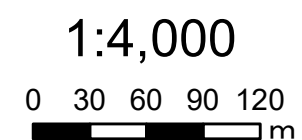


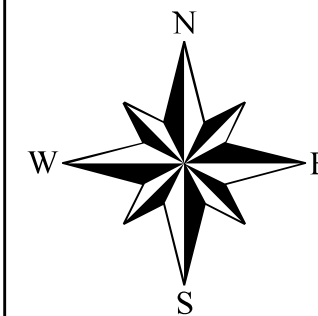
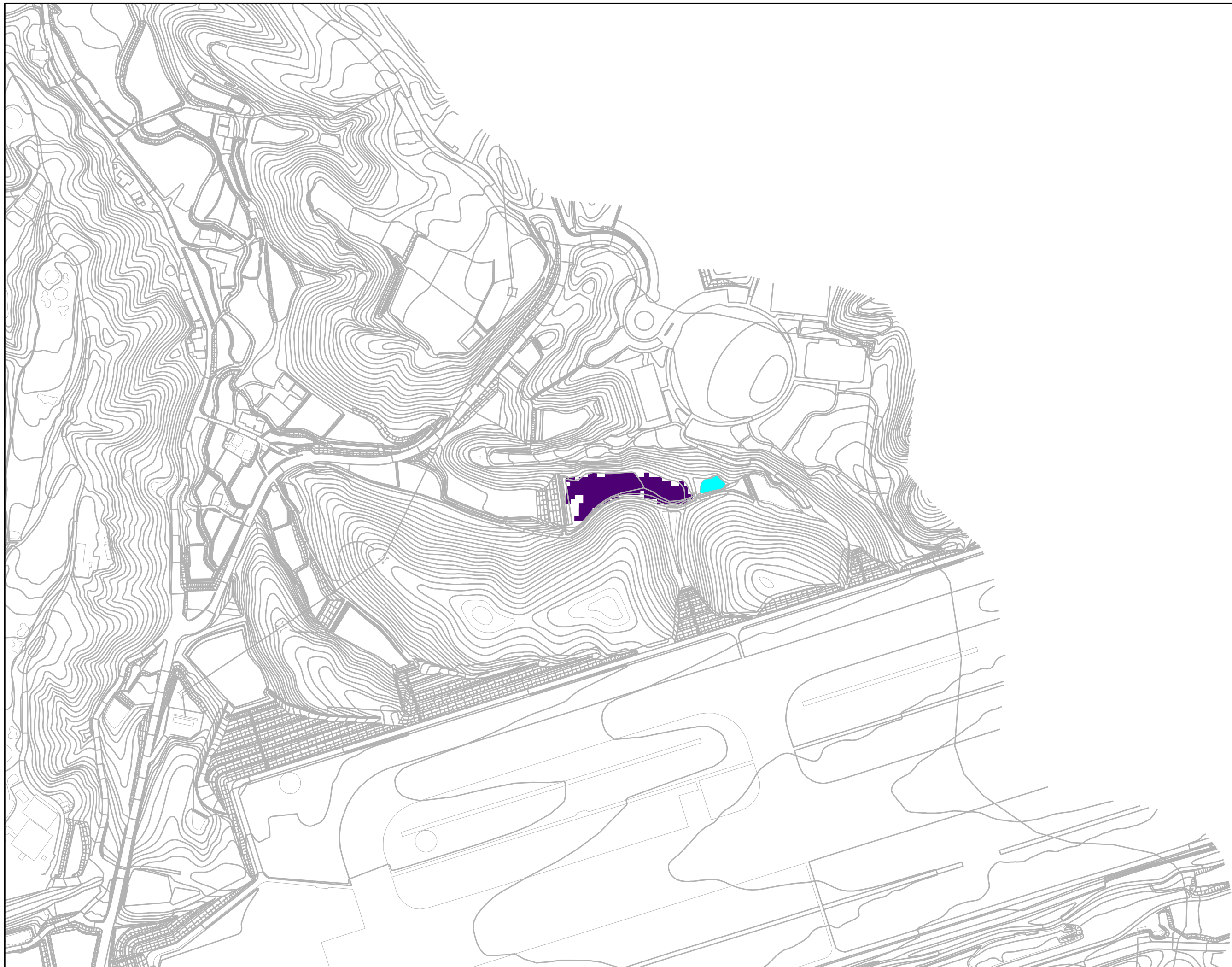


綾川町  
浸水想定区域図  
【歩行困難】

小屋谷下池

凡例	
歩行困難	
	不可能
	困難
	可能
	対象ため池





綾川町  
浸水想定区域図  
【浸水到達時間】

小屋谷下池

凡例  
浸水到達時間

- 5分後
- 10分後
- 15分後
- 30分後
- 45分後
- 60分後
- 対象ため池

1:4,000

