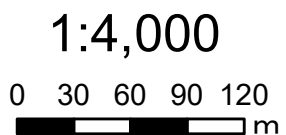
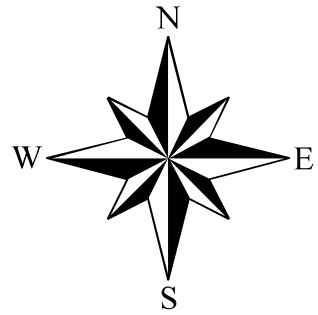
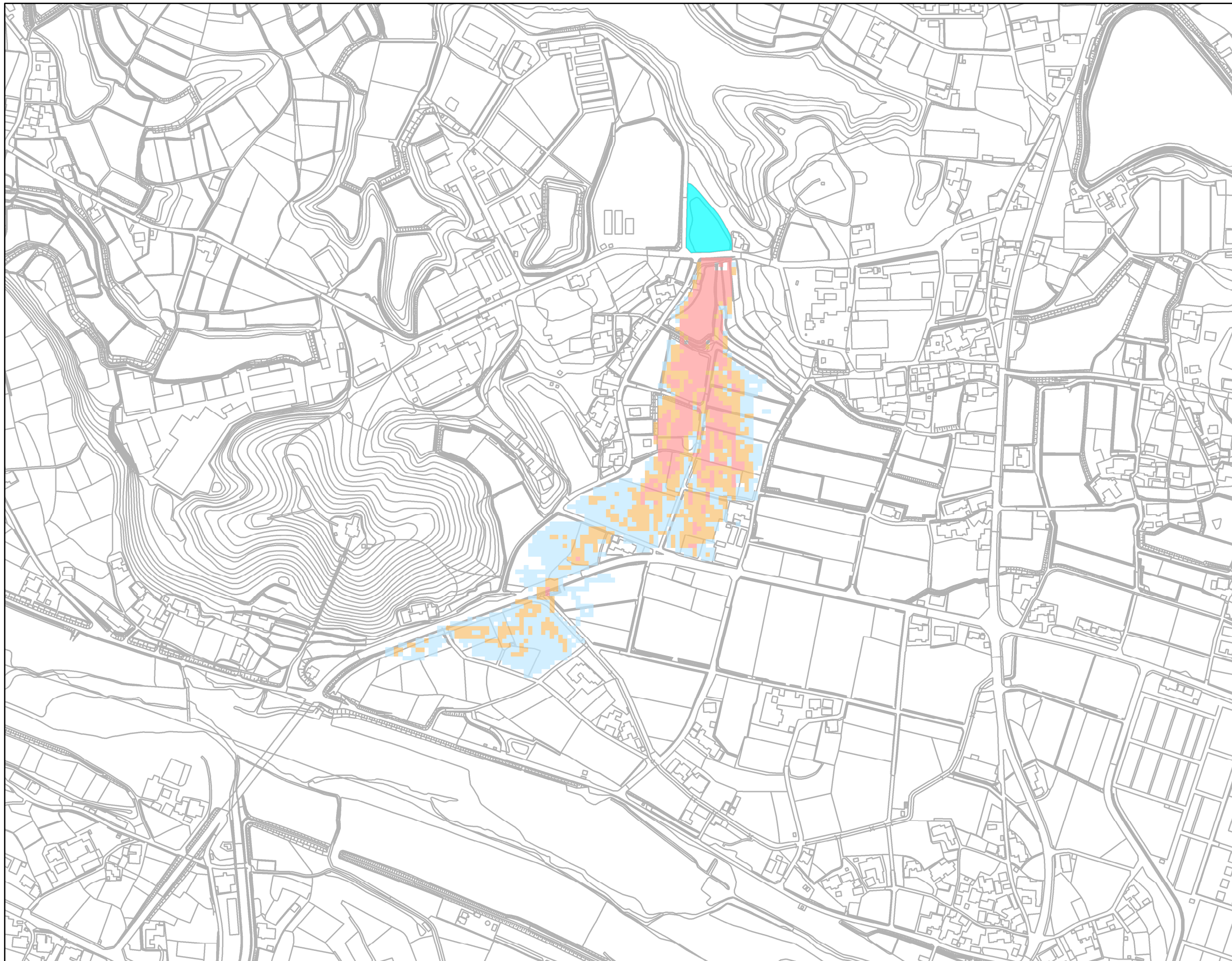


綾川町
浸水想定区域図
【最大浸水深】
西の坊上池

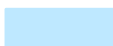



凡例
最大浸水深

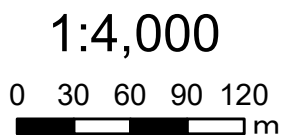
Yellow	0.5m未満
Light Green	0.5 ~ 1.0m未満
Light Blue	1.0 ~ 2.0m未満
Blue	2.0 ~ 3.0m未満
Red	3.0 ~ 5.0m未満
Purple	5.0m以上
Cyan	対象ため池

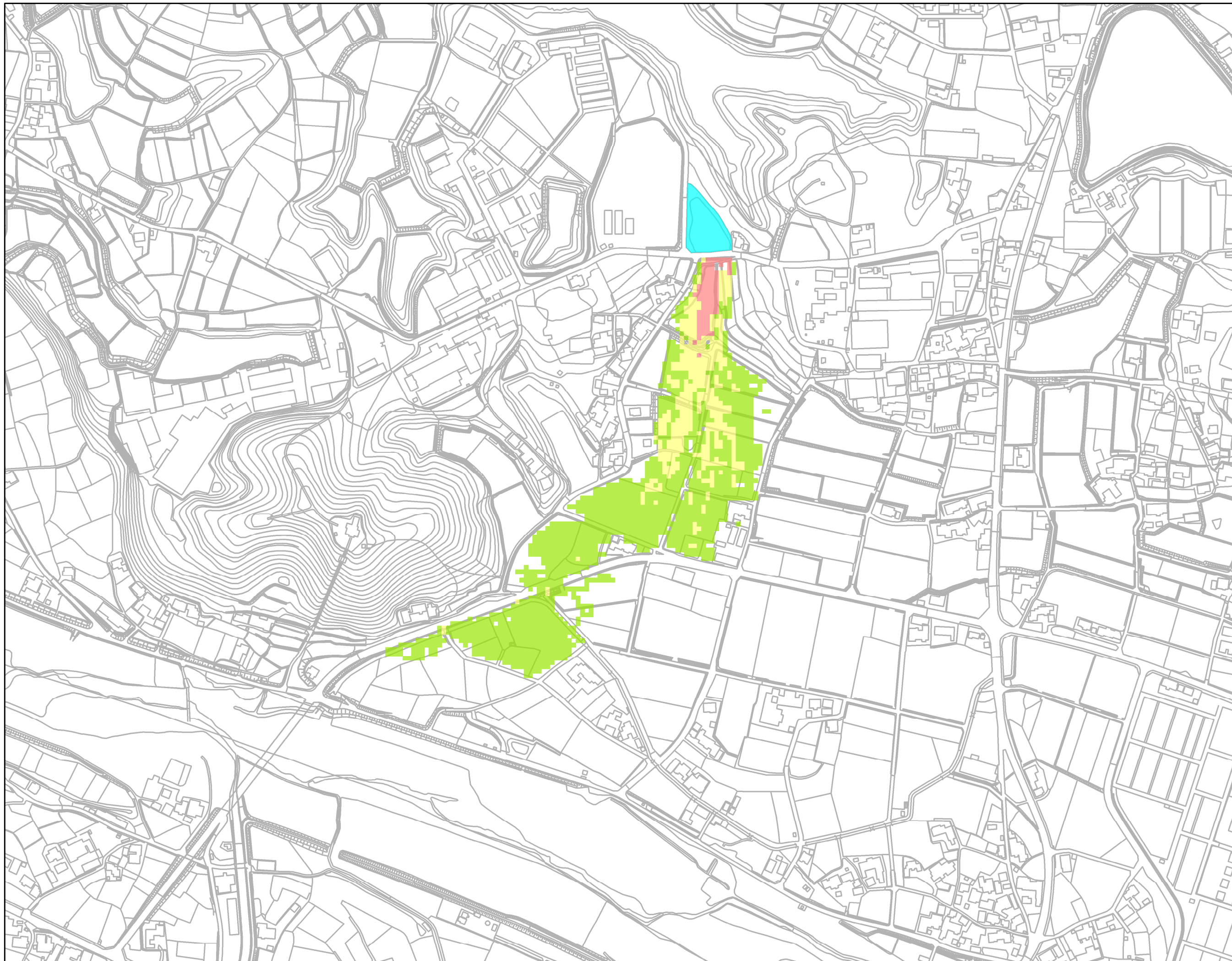




綾川町
浸水想定区域図
【最大流速】
西の坊上池




凡例	
最大流速	
	0.5m/s未満
	0.5 ~ 1.0m/s未満
	1.0m/s以上
	対象ため池

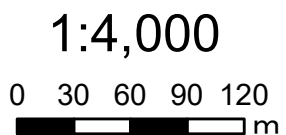


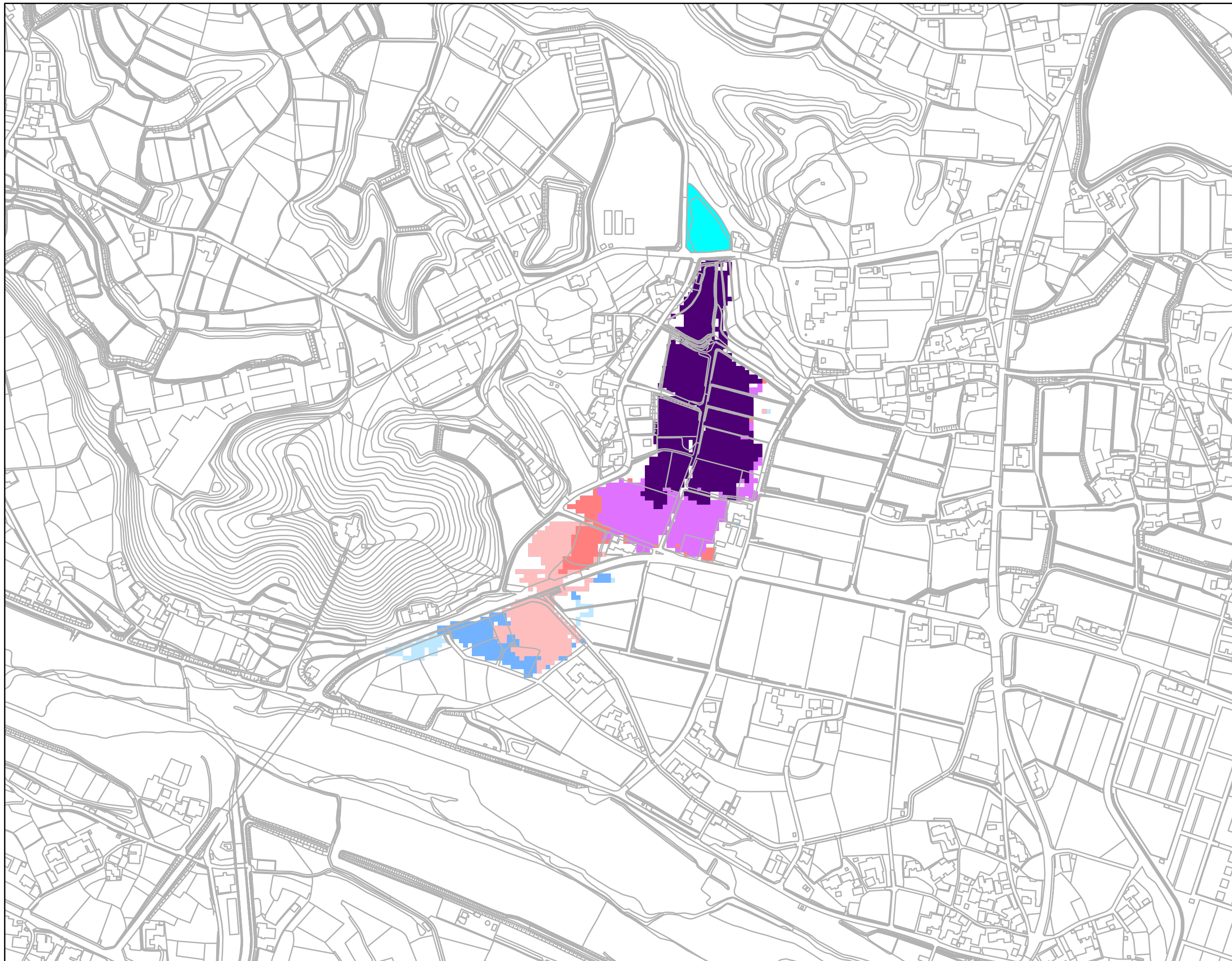


綾川町
浸水想定区域図
【歩行困難】

西の坊上池





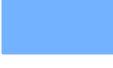
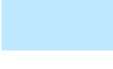

凡例	
歩行困難	
	不可能
	困難
	可能
	対象ため池





綾川町
浸水想定区域図
【浸水到達時間】

西の坊上池

凡例	
浸水到達時間	
	5分後
	10分後
	15分後
	30分後
	45分後
	60分後
	対象ため池

1:4,000

