
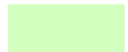
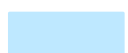
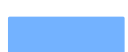





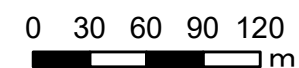
綾川町
浸水想定区域図
【最大浸水深】

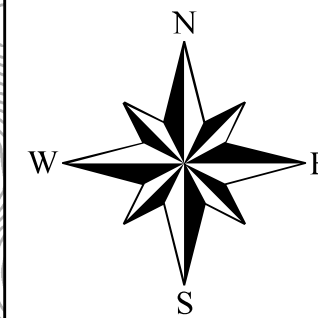
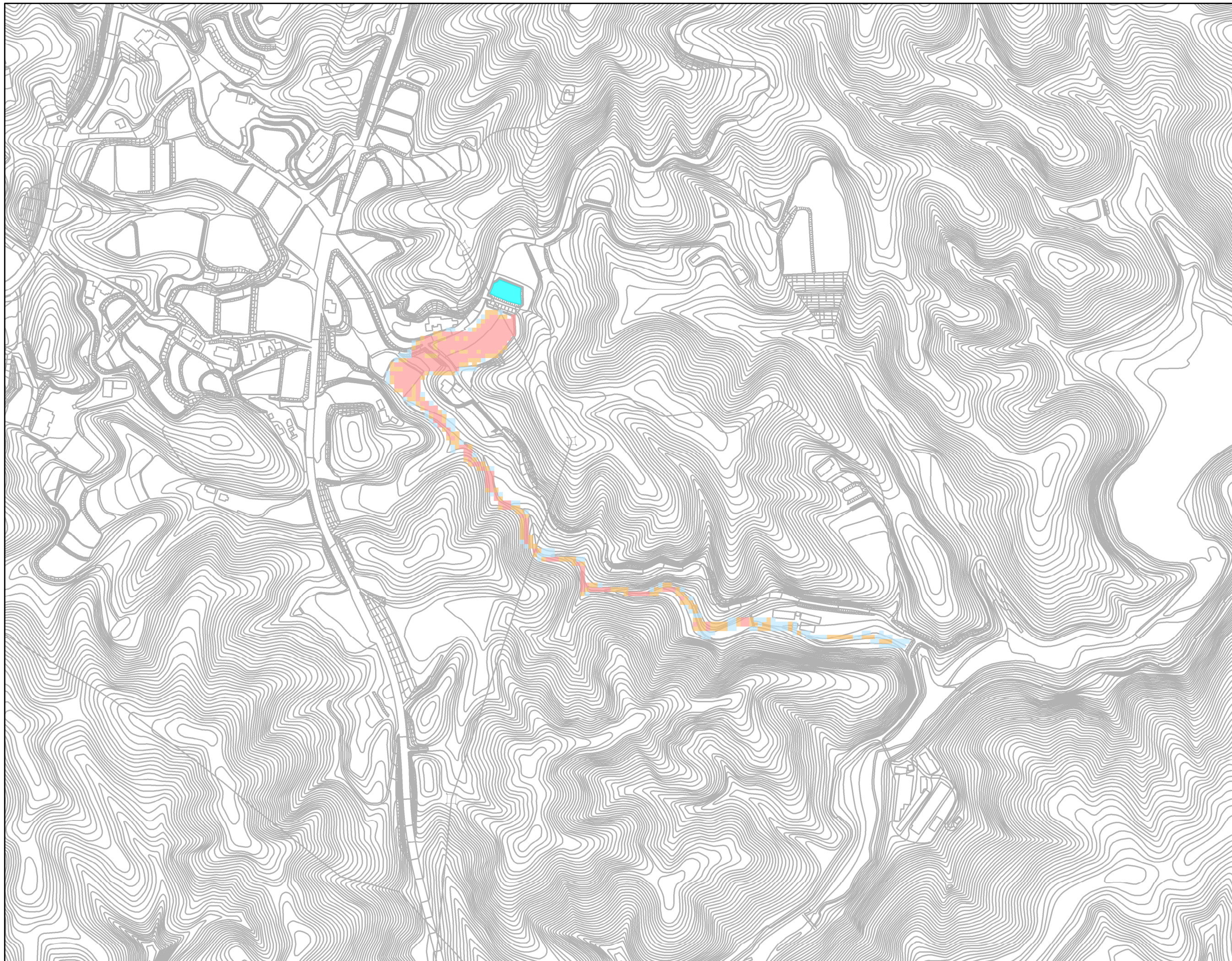
前佐古池

凡例
最大浸水深

	0.5m未満
	0.5 ~1.0m未満
	1.0 ~2.0m未満
	2.0 ~3.0m未満
	3.0 ~5.0m未満
	5.0m以上
	対象ため池

1:4,000



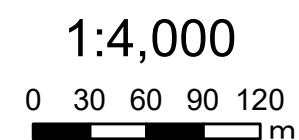


綾川町
浸水想定区域図
【最大流速】

前佐古池

凡例
最大流速

0.5m/s未満
0.5 ~1.0m/s未満
1.0m/s以上
対象ため池



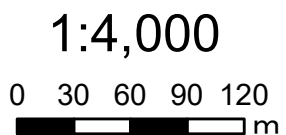


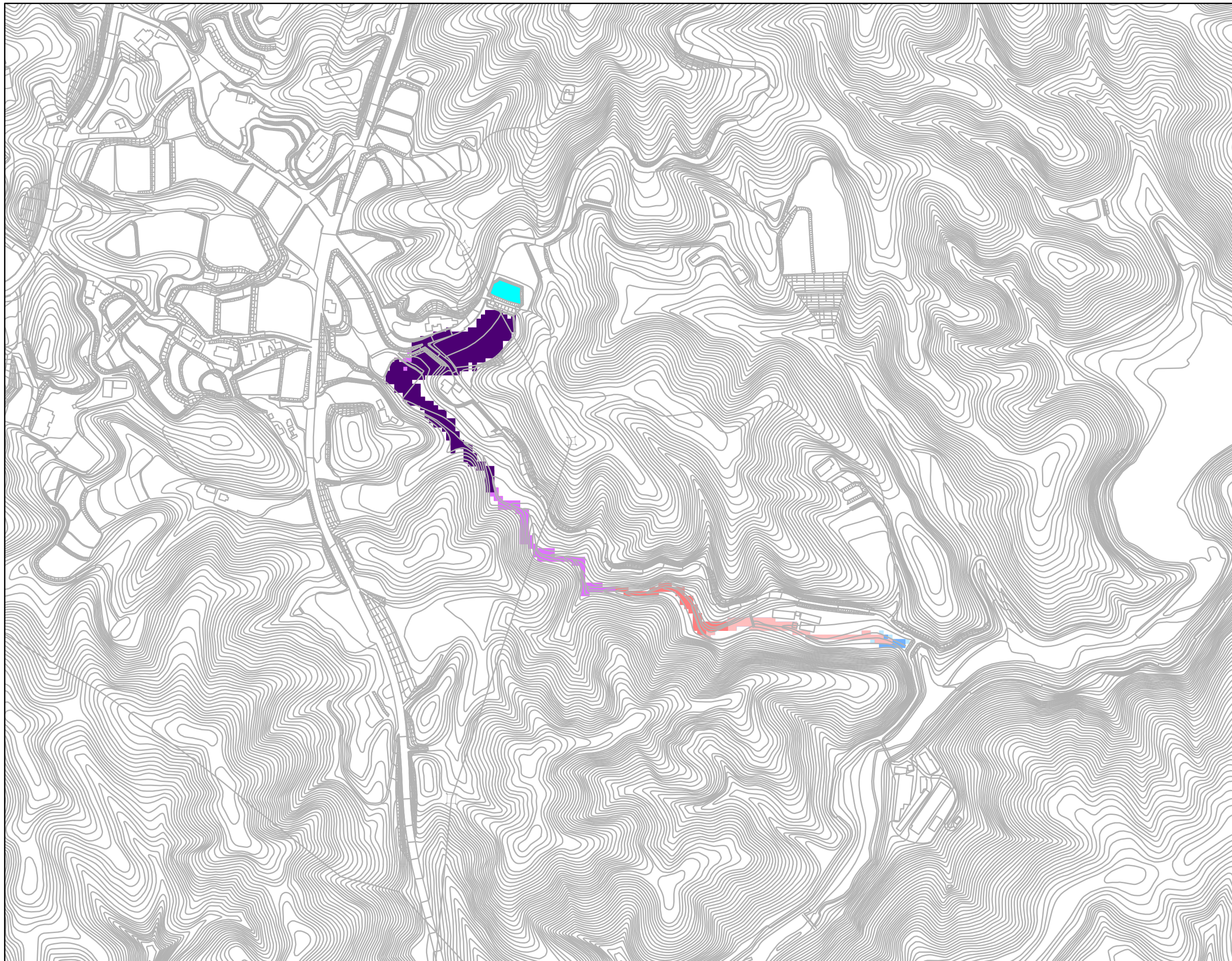
綾川町
浸水想定区域図
【歩行困難】

前佐古池

凡例
歩行困難





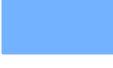
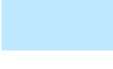

不可能	不可能
困難	困難
可能	可能
対象ため池	対象ため池





綾川町
浸水想定区域図
【浸水到達時間】

前佐古池

凡例	
浸水到達時間	
	5分後
	10分後
	15分後
	30分後
	45分後
	60分後
	対象ため池

1:4,000

